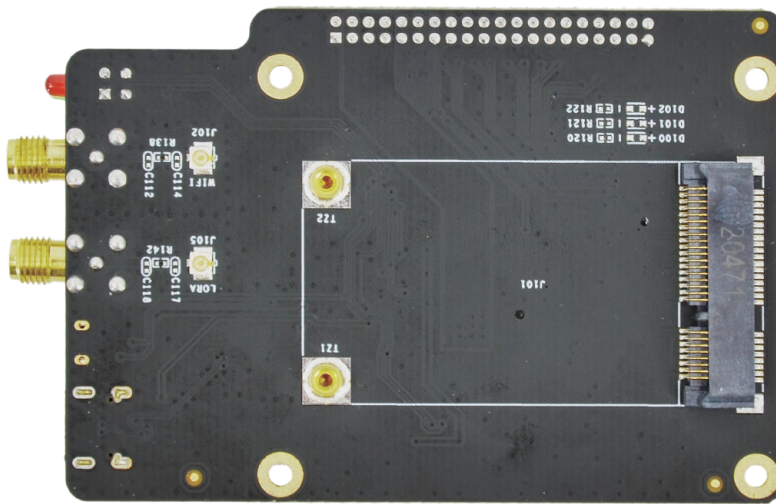


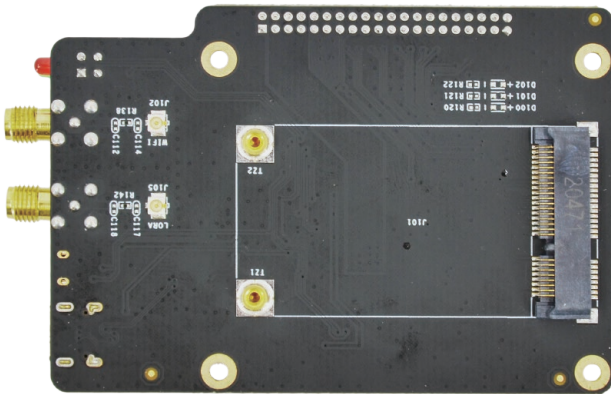
DEBIX Model A LoRa Board



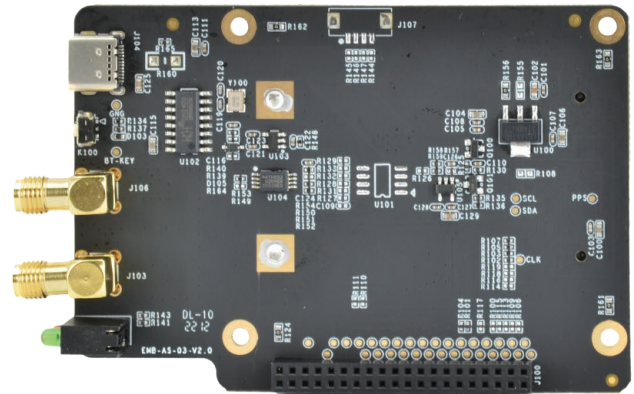
DEBIX Model A LoRa Board

Overview:

DEBIX Model A LoRa Board fits DEBIX Model A and provides a Mini PCIe interface for LoRa Module. LoRa enables long-range transmissions with low power consumption. In addition to a LoRa Antenna Connector, it also has a Wifi Antenna Connector and Bluetooth Pairing Button.



(Front View)



(Back View)

Specification:

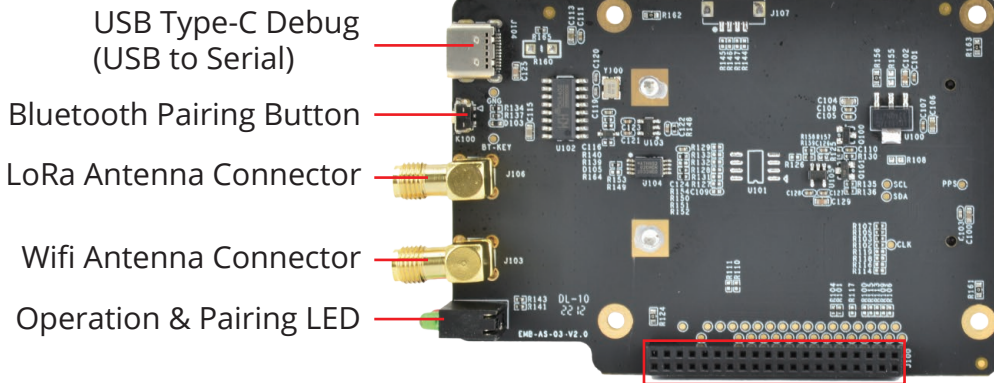
I/O Interfaces

USB	1 x USB Type-C Debug (USB to Serial)
Mini PCIe	1 x Mini PCIe (LoRa Module)
Buttons	1 x Bluetooth Pairing Button
LED	1 x Operation Indicator, 1 x Pairing Indicator
External Antenna	1 x LoRa Antenna Connector, 1 x Wifi Antenna Connector
EEPROM	1 x 2Kbit EEPROM
Clipper Chip	1 x Secure Element, eg.ATECC608

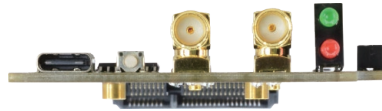
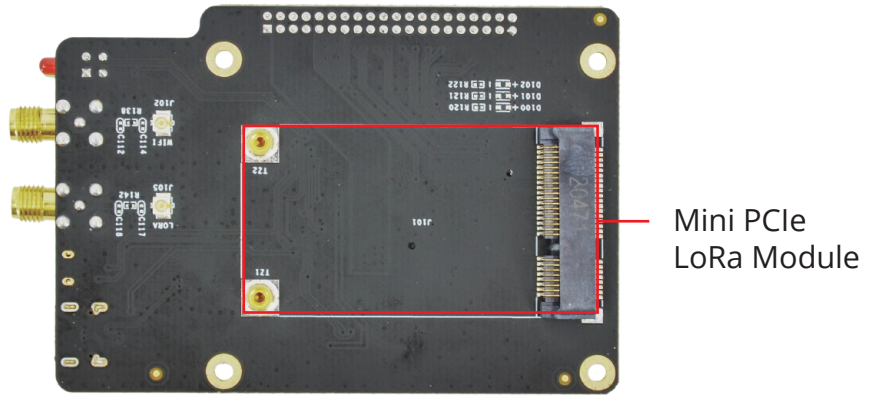
Certificates:



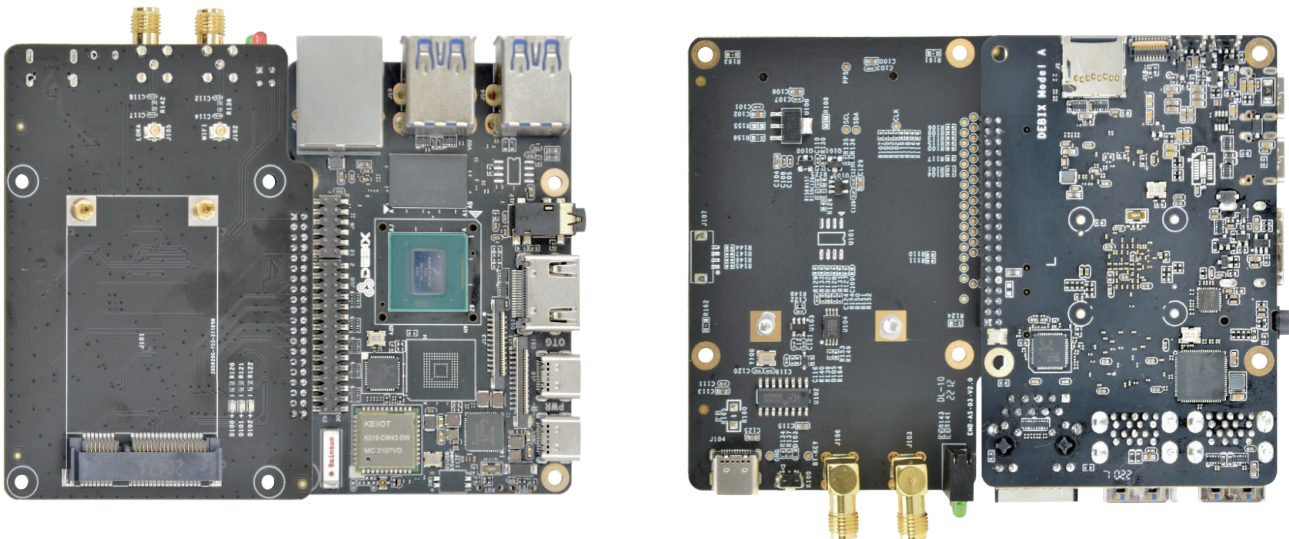
I/O Interfaces:



Connection Interface with DEBIX Model A



Connection with DEBIX Model A:



Safety Instruction:

To avoid malfunction or damage to this product please observe the following:

- Do not expose to water, moisture or place on a conductive surface whilst in operation.
- Take care while handling to avoid mechanical or electrical damage to the printed circuit board and connectors.
- Avoid handling the printed circuit board whilst it is powered and only handle by the edges to minimize the risk of electrostatic discharge damage.

Warnings:

- This product should be used with DEBIX Model A.
- This product should be operated in a well-ventilated environment and, if used inside a case, the case should not be covered.
- This product should be placed on a stable, flat, non-conductive surface in use and should not be contacted by conductive items.
- Where peripherals are connected that do not include the cable or connector, the cable or connector must offer adequate insulation and operation in order that the relevant performance and safety requirements are met.

Contact Us:

OKdo Technology Limited

Address: Fifth Floor, Two Pancras Square, Kings Cross, London N1C 4AG

Telephone: +44(0)203 109 0210

Email: sales@okdo.com; support@okdo.com

Website: www.OKdo.com