

## Description

This 4 position through hole PCB 2.54mm., open (no headers).

Launchpad let's makers attach to their component, microcontroller or other connections directly with or without their own headers.



## Features

This open Launchpad lets Maker's integrate it into their project without headers.

Open through-hole design for easy soldering, sewing, or hard connection  
Extra mounting points for versatile installation.

Works great with Neopixels, hard soldering Grove cables for wearables, and other digital or analog sensors with 4 pin outs.



MAKEON™

# 4 PAD

- O P E N -  
LAUNCHPAD

## Safety Guidelines

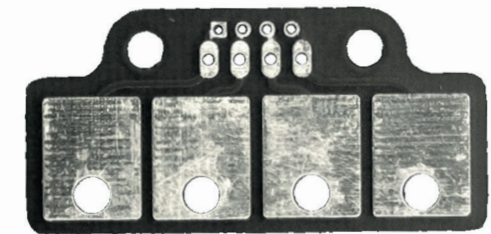
Warning: Contains small parts, sharp points/edges, and conductive materials.

Avoid damage to the product. Avoid corrosive materials, water and abrasives.

Avoid oral contact. Avoid other materials that could affect the integrity of the product.

## Benefits

- »Extend the contact point for all types of conductive materials and cables to maximize accessibility.
- »Re-usable, solder-free connections to components like resistors, capacitors, diodes, etc.for plug and play activities or quick pin/part change outs.
- »Accommodates low profile, flexible circuitry for tight spaces, wearables, and more!



LPD\_4\_WHTNUZZZv100

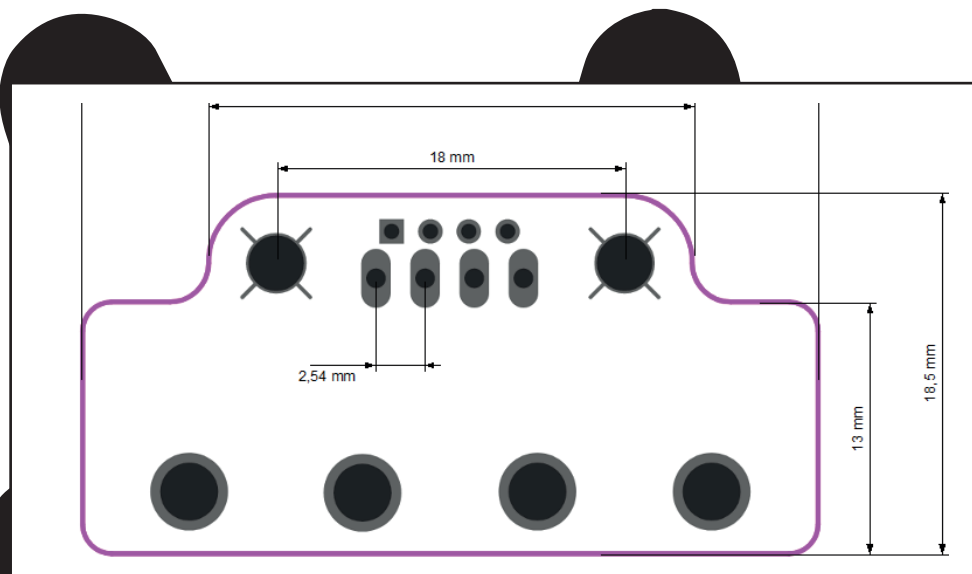
LPD\_4\_BLKNUZZZv100

## MakeON Products

MakeON Space Tape Roll, MakeON Space Hook & Loop, MakeON Space Tape Sheet, MakeON Launchpads, MakeON Journey Inventure Kit, MakeON Expedition Inventure Kit

## OKdo

Arduino, Grove, Raspberry Pi, Microbit, Adafruit Feather, Kitronik E-Textiles Kit for the BBC micro:bit, Bare Conductive Electric Paint Tube 10ML



### Instructions

Use Space tape, conductive paint, wire, thread, copper tape, alligator clips, banana plugs and more.

Gather electronic components i.e headers. microControllers or sensors.

Position Open Model Launchpad on circuit.

Connect Pad to circuit using method of choice i.e hard soldering or sewing. Wear Safety Glasses.

### Frequently Asked Questions

Who uses Launchpads?

MakeOn Products are recommended for anyone 5 years old and up.

### Electronic Data

Type	Amps
Maximale Current Per Track	1.3
$\Delta T^{\circ}F = 50$	
$\Delta T^{\circ}C = 10$	