

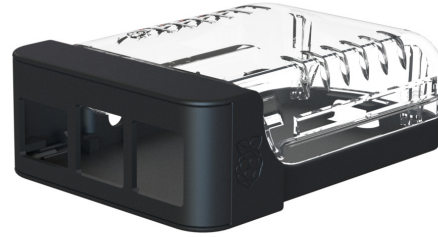
DEVELOPMENT BOARD ENCLOSURES

Raspberry Pi 3 B+ HAT Enclosure

- Enclosure is compatible with Pi 3 B+ and HAT's including the Sense HAT
- Removable clear cover
- Pi clips into enclosure without screws
- Rear LED light-pipes
- Knockouts for GPIO and Sense Hat joystick
- Cut-outs for USB and ethernet
- Rear cut-out for SD card access
- Side cut-outs for HDMI, audio and micro USB
- Ventilated top cover

SPECIFICATION	
Materials	Base and front – UL94-HB black ABS Cover – UL94-HB clear PC
Standard unit includes	Supplied with x4 self-adhesive rubber feet

CBRPIHAT-BLK



UNIVERSAL
ENCLOSURES

HAND HELD
CASES

HEAVY DUTY
ENCLOSURES

DIN RAIL
ENCLOSURES

INTERFACE
SUPPORTS

ELECTRICAL
ENCLOSURES

DIECAST
& METAL
ENCLOSURES

DESKTOP &
INSTRUMENT
CASES

MULTI-
PURPOSE
& POTTING
BOXES

19"
ENCLOSURES

19" CABINETS

DEVELOPMENT
BOARD
ENCLOSURES

CUSTOM
SIZED
ENCLOSURES

FSPT/
CUSTOM
SERVICES